

TURBO-SEAL® FREEZER

HIGH PERFORMANCE ROLLING DOOR

The Ultimate High-Speed Rolling Door for Freezers and Coolers.

The Turbo-Seal Freezer door is one of the fastest roll doors in the world. In a fast-moving cold storage environment, that translates into minimized air infiltration and improved traffic flow for superior productivity.

Designed to meet the needs of cold storage facilities, the Turbo-Seal's low profile design permits it to fit almost anywhere. Its tight seal conserves energy and the heated side columns and three defrost options virtually eliminate frost build up. Combine this with its ability to withstand the impact of a forklift, and the Turbo-Seal is the best high-speed freezer roll door on the market.

Fast - Opens at up to 100 inches per second. Conserves energy and maintains constant climate control.

Energy Efficient - Full-height dual vinyl weather-seals in side column. Low temperature vinyl seals in head and bottom bar.

Safe - Dual electric photo eyes and pneumatic dual-chamber reversing edge in bottom bar are standard.

Takes a Hit - Quick-Set™, Break-Away™ tabs allow bottom bar to be reset in just seconds, without tools, virtually eliminating down time.

Frost Free - Three different defrost system options and heated side columns prevent frost build-up.

Low Profile - Side columns are only 8 inches wide with 6 inches of projection. Fits virtually anywhere.



RYTEC
CORPORATION
Driving The Door Industry.™

TURBO-SEAL® FREEZER

HIGH PERFORMANCE ROLLING DOOR

Specifications: Subject to change

Model: Rytec® Turbo-Seal® Freezer Door

Standard Size: Up to 12 feet wide by 16 feet high.

Door Panel: 2-ply Rilon™ panel material with optional wind ribs to provide stability in negative pressure environments.

Side Frames: Fully bolt-together, reinforced heated side frames with full-height, vinyl weatherseal to seal against panel material.

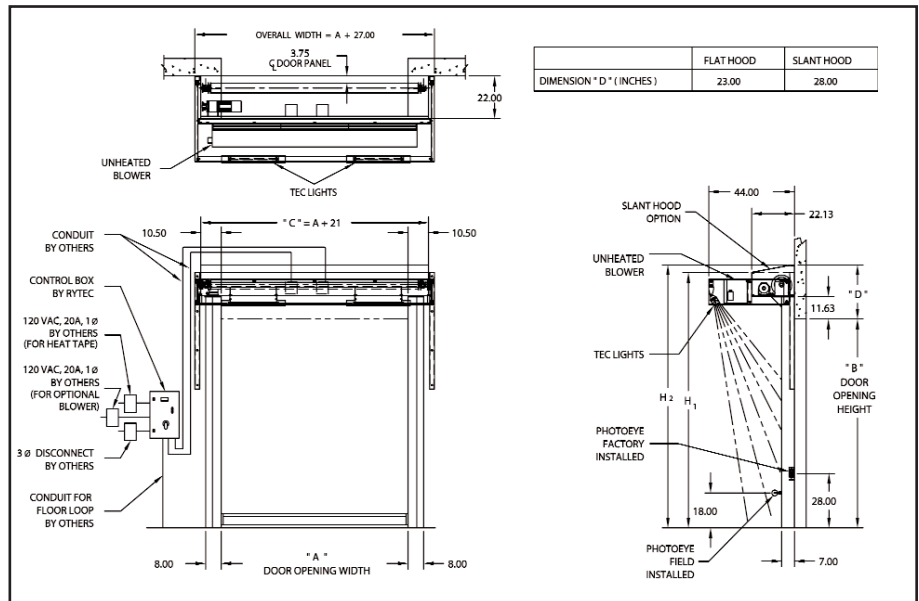
Counterbalance: Dual guided counterweights custom-sized to provide high-speed operation with less stress on the drive system.

Bottom Bar: Quick-set, Break-Away extruded aluminum bottom bar capable of releasing in either direction without damage to bar, safety reversing edge or side covers. Opening of side covers is not required to reset bottom bar. Pneumatic, dual-chamber reversing edge standard on bottom bar. Standard dual cut-off switches shut off motor when bottom bar is impacted. No exposed junction box on bottom bar. Low temperature vinyl loop hugs floor contour for tight seal.

Drive System: Three-phase, variable speed AC Drive provides soft acceleration and deceleration. Independent opening and closing speeds provide flexibility to accommodate any application. Motor and electrical components are factory wired to junction boxes in the head assembly.

Defrost System: Three defrost options for warm side mount only:

- Patented Tec-Light™ System
- Tec-Lights™ with unheated blower
- Heated blower system



Tec-Lights with Unheated Blower
Three optional defrost systems available to prevent frost build-up.

Travel Speed: Opens at up to 100 inches per second.

Electrical Controls: System 3® controller is housed in a NEMA 4 rated enclosure with factory set parameters. Self-diagnostic features and a two-line, 32-character LCD display in English, Spanish or French provide quick and straightforward installation and control adjustments. Programmable inputs and outputs accommodate special control requirements without the need for additional electrical components. Three-phase fused disconnect is standard.

Warranty: One year limited warranty on materials and workmanship. Lifetime warranty on door counterweights. Three year limited warranty on 2-ply Rilon panel material.



Easy to Reset
Quick-Set, Break-Away tabs allow bottom bar to be reset in just seconds, without tools, after taking a hit.

Counterbalance System
Guided counterweight design eliminates stress and strain on the motor.



One Cedar Parkway
Jackson, WI 53037-0403
Phone: 262-677-9046
Fax: 262-677-2058
Toll Free: 888-GO-RYTEC
Email: info@rytecdoors.com
Web: www.rytecdoors.com